

Family Engagement Roundtable

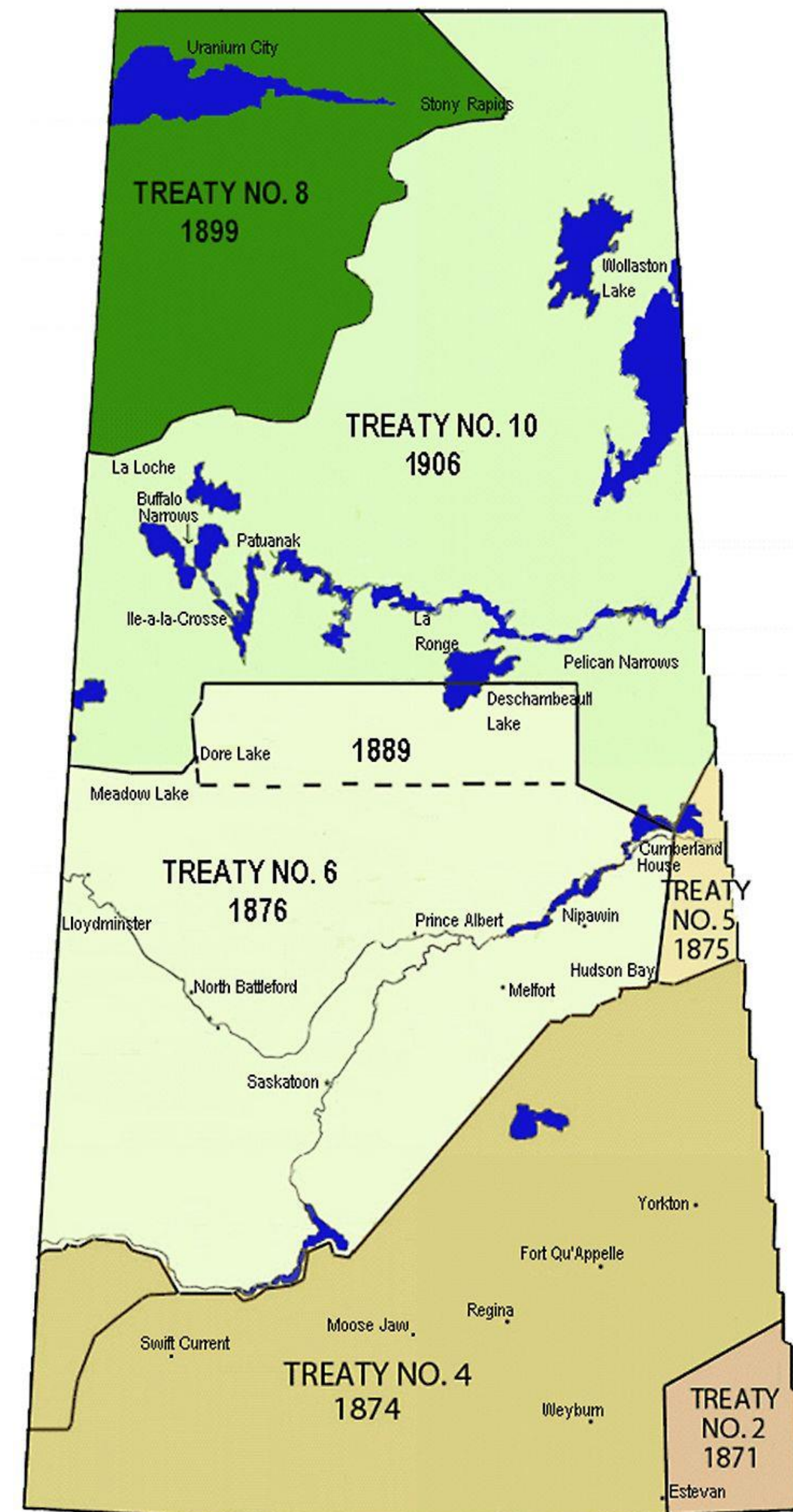
April 24th, 2024



ELMWOOD

Land Acknowledgement

Elmwood embraces the spirit of Truth and Reconciliation recognizing the traditional lands of Indigenous and Metis peoples- referred to as Treaty 6 Territory. We respect the histories, languages and cultures of all First Peoples of Canada.



Agenda

1. Manor Transition Initiative Update
2. Resident Support Update
3. Community Hub Engagement

Status and Timelines

	Funding Approval	Tendering	Construction	Lease and Possession	Start- Up	Home Opening
2920 14 th Street	*	*	*	*	*	*
706 Brightsand Crescent	*	*	*	*	*	*
103 Holmes Crescent	*	*	*	*	*	*
3204 Mountbatten Street	*	*	*		*	
Community Home #5	*					
Community Home #6	*					

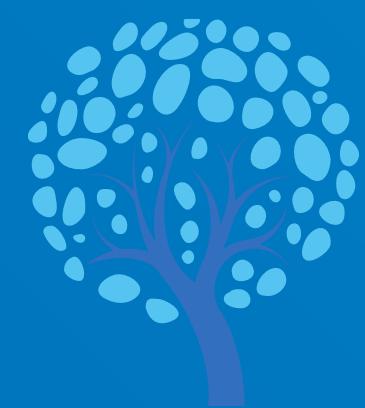


ELMWOOD

Celebrating the First 3 Home Openings!

We are excited to share that the first 3 Community Homes as part of the Initiative have officially opened!

- Transition Homes #5 and #6 were approved as part of the 2024/2025 provincial budget. Now that these homes have been approved, lots will be sourced and secured, and design of the homes will begin.



ELMWOOD

Resident, Family and Community Engagement

Residents	Families	Community
1:1 Conversations	Regular 1:1 Updates by Project Specialist	Continued Engagement and Communication with 4 Community Associations
“My Manor Transition Journey” Individualized Stories	Non- Resident Portion of Quality- of- Life Study (Second round to begin in April 2024)	Participation in Community Association Events/Planning with Associations for Future Events
Roommate Planning Dinners for Homes 3 and 4	The Future Focus	Partnerships with Inclusion Saskatchewan and CLASI to Support Residents
Start- Up Shopping for Homes 2-4	Family Roundtables	



Outcomes and Evaluation Update

Elmwood has partnered with the Community University Institute for Social Research (CUISR) to complete a Quality-of-Life Study for the Manor Transition Initiative.

- The initial Resident and Non-Resident portions of the study have now concluded.
- The Year One report of findings has been compiled by CUISR and will serve as the benchmark for the subsequent stages of the study.
- Year Two of the study to commence in spring 2024 which includes a second interview of Non- Residents.
- The second round of Resident interviews will begin in fall 2024 once residents who have moved have settled into their new homes.
- If you would like to participate in this study, please contact Linda Boyko, Project Specialist.



Intergenerational Learning

- Elmwood has recently expanded our partnership with Wild Spirit Education.
- Students are now attending daily and range from 2 years old to 18 years old.
- Residents are encouraged to participate in activities and lectures.



Health and Wellness Update

- With the Manor Transition in full swing, here are the ways the Health and Wellness Team have adjusted their services to continue to meet needs:
 - ❖ Shift to Community Based Model
 - ❖ Adjusted Hours
 - ❖ Strengthened Partnership with Home Care
 - ❖ In Clinic Dr. Appointments

What Comes Next?



Access to
Transportation



A lack of inclusive
Health and
Wellness services



A lack of
Centralized Hub

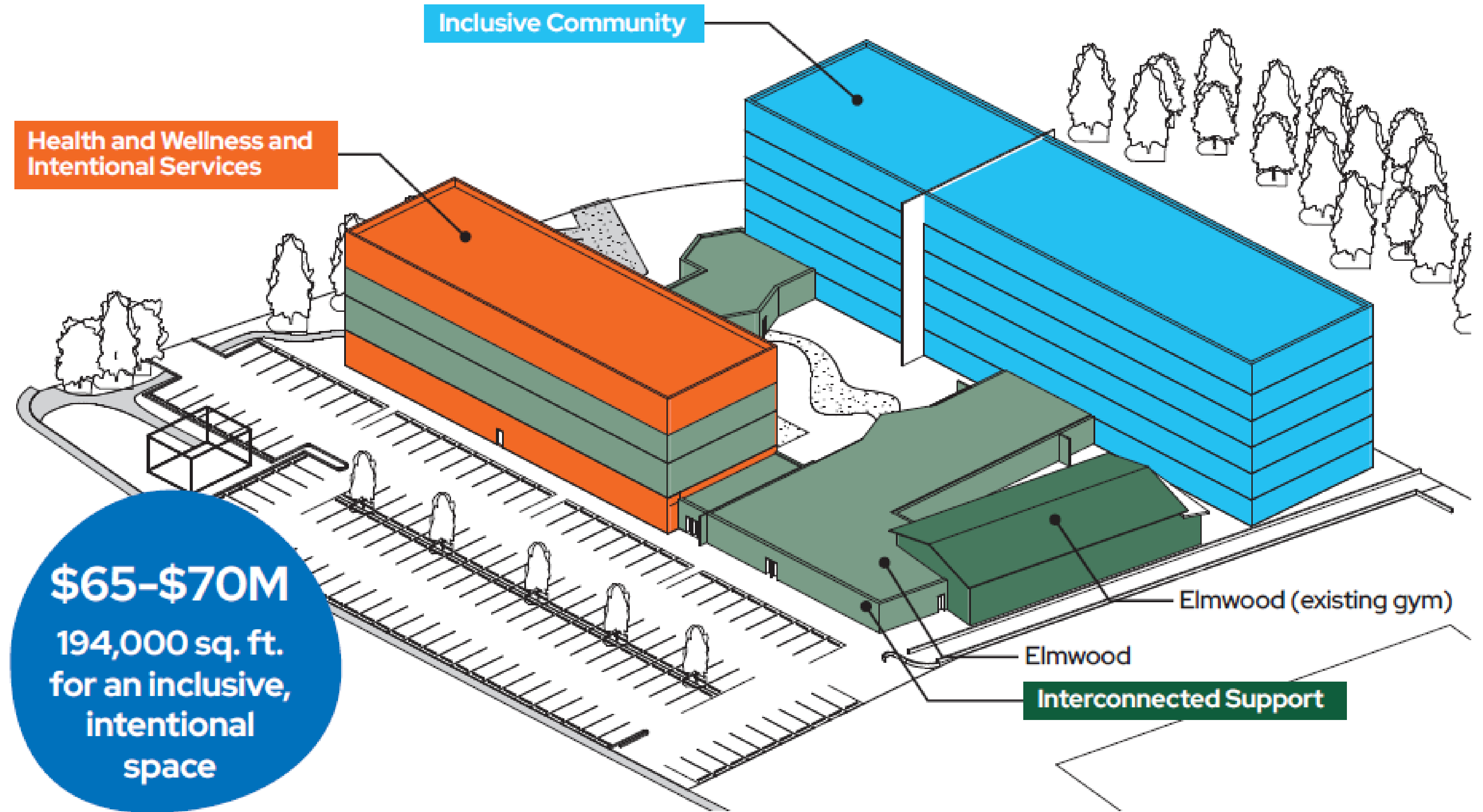


ELMWOOD

Welcome Home

A warm welcome. An Inviting Home. An intentional community.

Community Hub Initiative – *The Homebase*



\$65-\$70M
194,000 sq. ft.
for an inclusive,
intentional
space



*** Concept Only – Subject to Change***

Welcome Home

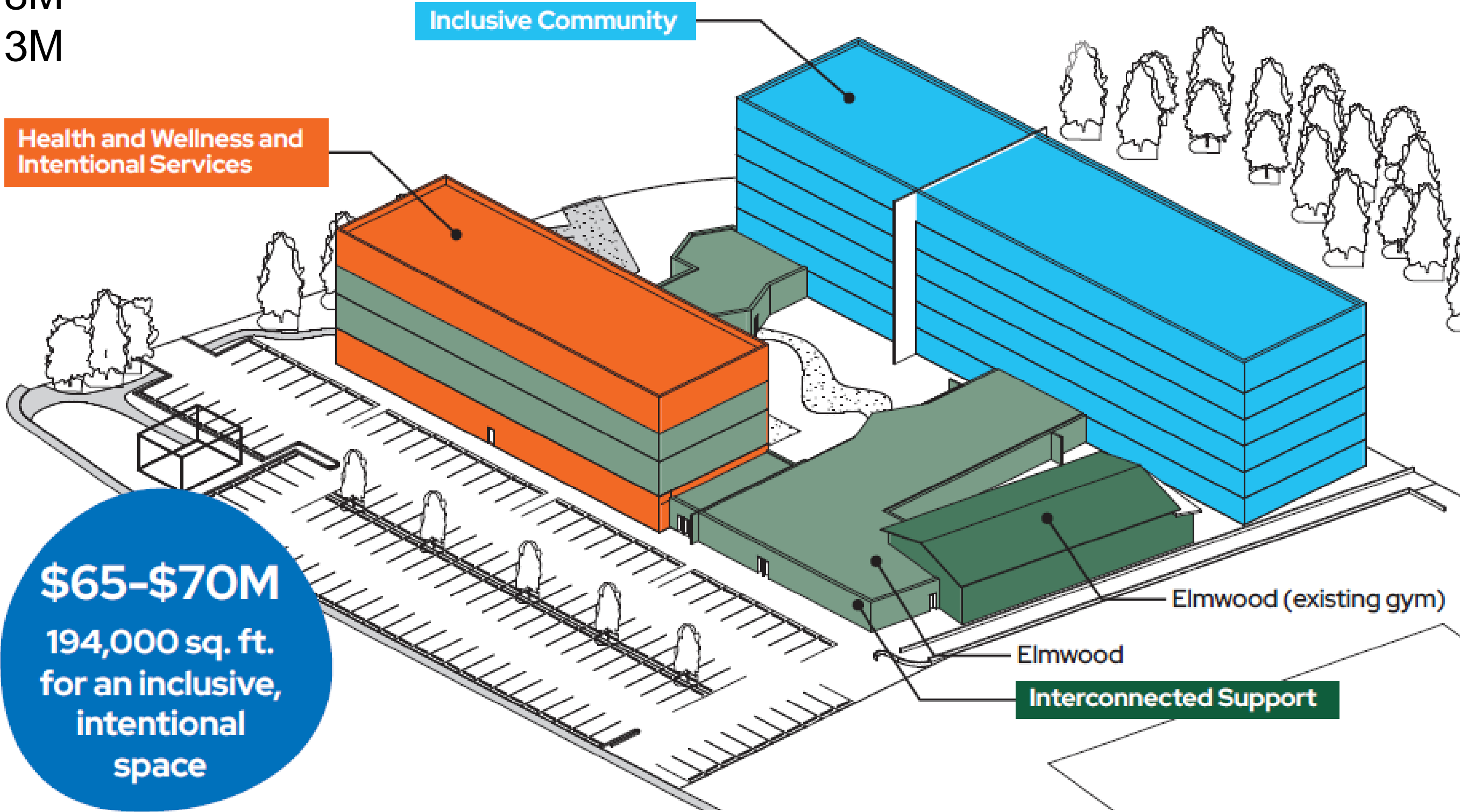
Community Hub Initiative – *The Homebase*

A warm welcome. An Inviting Home. An intentional community.

- Inclusive Community:** Residential– 45M
- Intentional Services:** Health and Wellness– 8M
- Interconnected Support:** Programming – 13M



In Saskatoon, no dental office has the necessary lift for some residents, leaving Royal University Hospital as the only option, but with a lengthy waitlist. This creates hardships for residents who require regular dental care every 3-6 months. Due to the delays, dental visits become reactive rather than proactive, potentially leading to preventable tooth extractions.



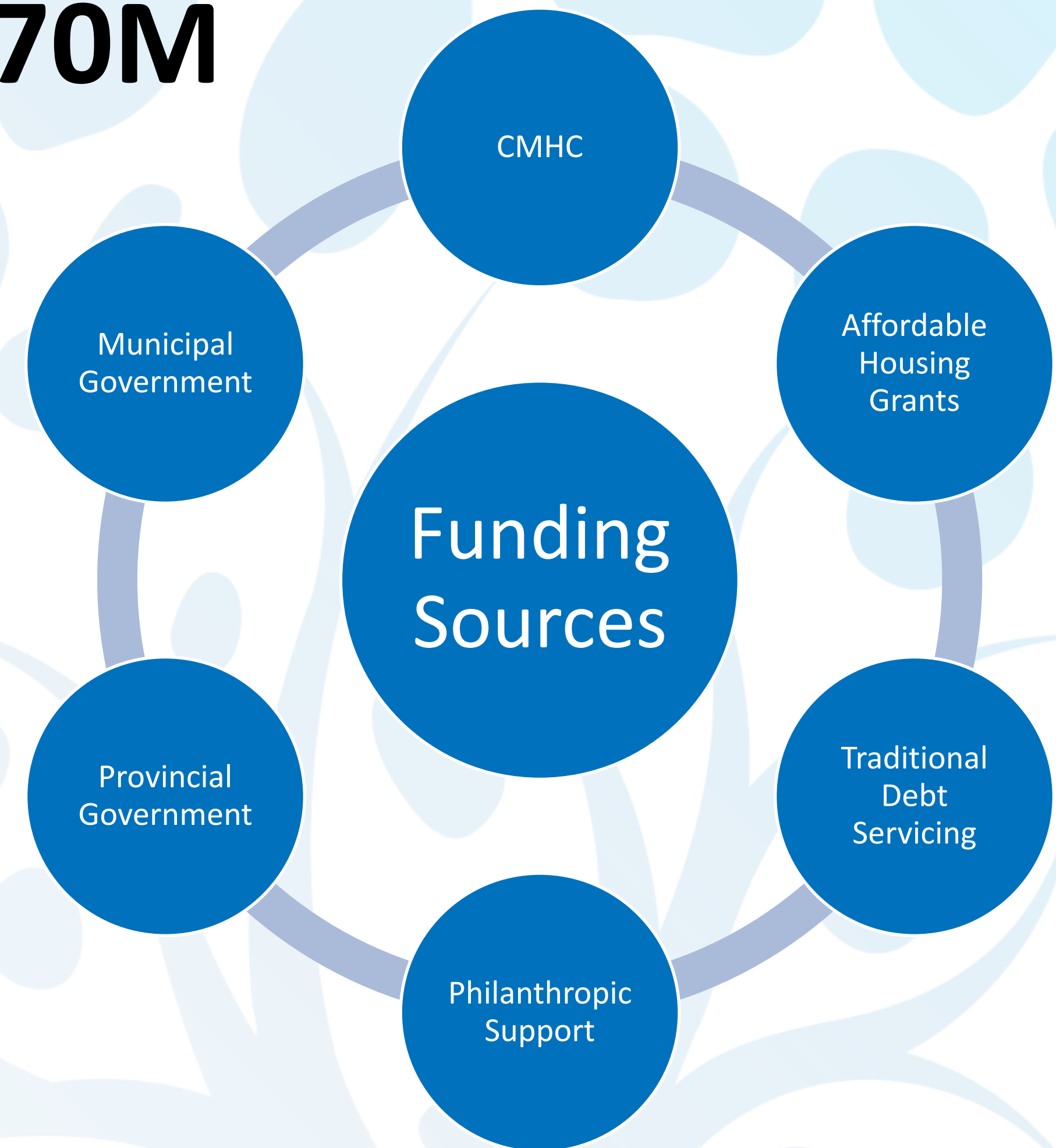
*** Concept Only – Subject to Change***

Financial Overview and Funding Strategy

Total Initiative Cost: 65M-70M

Elmwood is actively:

- ✓ Submitting Applications for Funding
- ✓ Completing Philanthropic Feasibility Study
- ✓ Engaging with Key Partners



Community Hub – Engaging YOU!

Future Vision for Elmwood:

- What do you envision for the future of Elmwood?
- How can Elmwood become an even more vibrant and supportive community in the years to come?

Elements for the Community Hub:

- What are the most important features you would like to see in a Community Hub to make it a welcoming and accessible space?
- Are there specific interests or hobbies that you'd like to see included?
- What design elements are important to promote inclusivity and social connection in the hub?

Enhancing Community Inclusion:

- What barriers to inclusion currently exist in Elmwood, and how can the Hub address or mitigate them effectively?
- How would you like to be involved in the planning and implementation process of the community hub?



Thank You!

Rachael Steinke, Executive Director

rsteinke@elmwoodyxe.ca

306-649-6650

Linda Boyko, Project Specialist

lboyko@elmwoodyxe.ca

306-241-7228



ELMWOOD

