

Family Engagement Roundtable

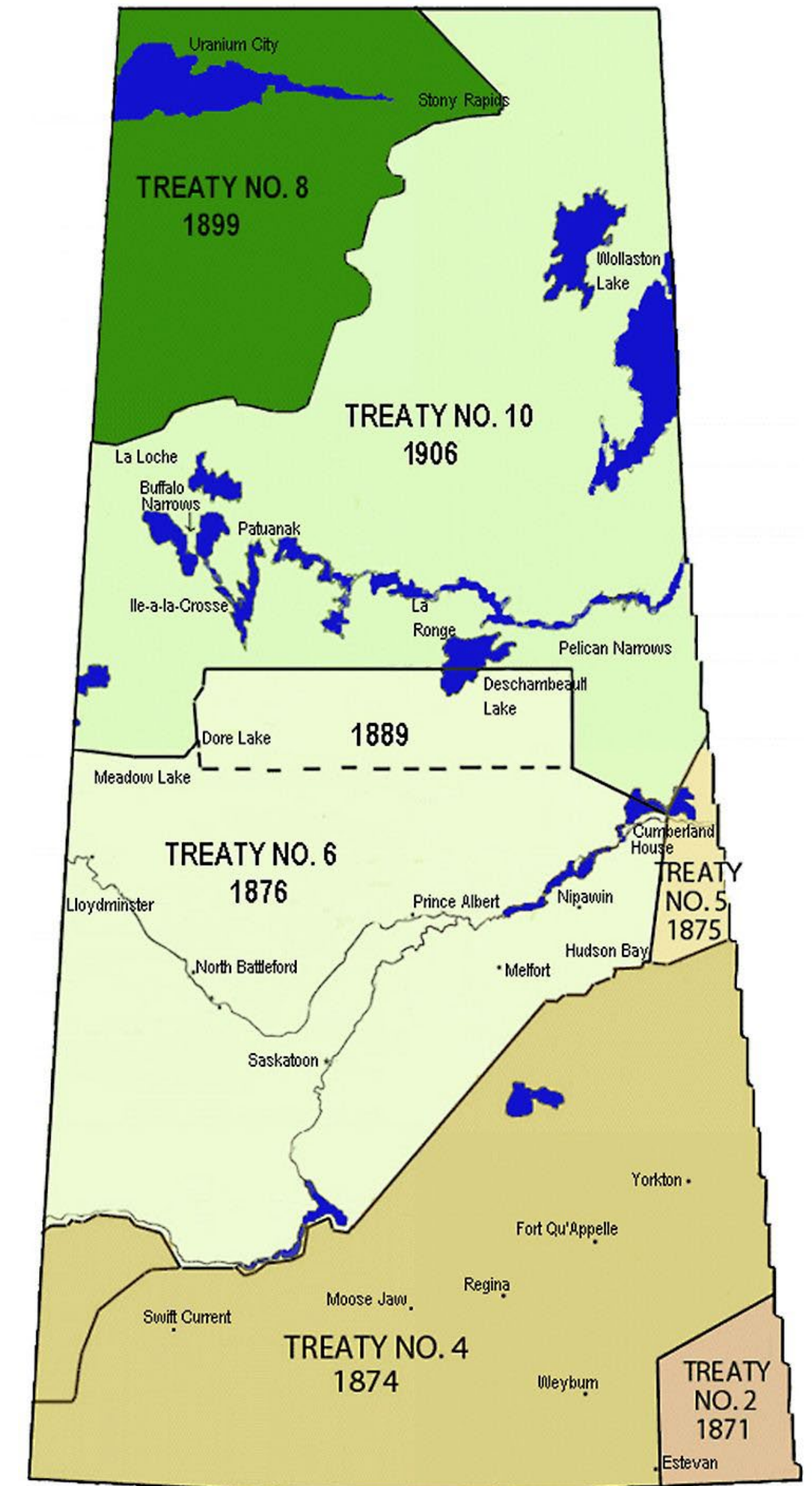
October 25th, 2023



ELMWOOD

Land Acknowledgement

Elmwood embraces the spirit of Truth and Reconciliation recognizing the traditional lands of Indigenous and Metis peoples- referred to as Treaty 6 Territory. We respect the histories, languages and cultures of all First Peoples of Canada.



Agenda

1. Manor Transition Initiative Update
2. Community Hub Update
3. Community Home/Resident Support Update
4. Challenges and Advocacy – How Can You Help!
5. Discussion and Questions

Resident, Family and Community Engagement

Residents	Families	Community
1:1 Conversations	Regular 1:1 Updates by Project Specialist	Regular Engagement and Communication with 4 Community Associations.
“My Manor Transition Journey” Individualized Stories	Non-Resident Portion of Quality-of-Life Study (N:16)	Participation in Community Association Events.
“Our Road to Home” Vision Board	The Future Focus	Partnerships with Inclusion Saskatchewan and CLASI to support residents
Roommate Dinners for Homes 1 and 2	Family Roundtables	
Start-Up Shopping for Homes 1 and 2		
Resident Portion of Quality-of-Life Study (N:20)		



Team Member Update – Workplace Adjustment Plan

- The Workplace Adjustment Plan is now in place and has been shared with Team Members.
- For Manor Team Members who choose to transition to the new Community Homes, they will maintain their seniority, and be compensated in line with the Community Home Collective Agreement.

2920 – 14th Street

- 5/7 positions appointed to Manor Team Members.

706 Brightsand Crescent

- Positions posted.



ELMWOOD



Outcomes and Evaluation Update

Elmwood has partnered with the Community University Institute for Social Research (CUISR) to complete a Quality-of-Life Study for the Manor Transition Initiative.

- The initial Resident and Non-Resident portions of the study have now concluded.
- **80%** of residents chose to participate.
 - **35%** of residents participated with the support of a legally appointed guardian.
 - **25%** of residents participated with the support of their next-of-kin.
 - **40%** of residents participated with the support of an advocate from either Inclusion Saskatchewan (INSK) or Community living Association Saskatoon (CLASI).
- A preliminary, draft report of findings has been compiled by CUISR and will serve as the benchmark for the subsequent stages of the study.



Status and Timelines

	Funding Approval	Tendering	Construction	Lease & Possession	Start-Up	Opening
2920 - 14 th Street	*	*	*	*	*	
706 Brightsand Crescent	*	*	*	*		
103 Holmes Crescent	*	*	*	*		
3204 Mountbatten Street	*	*	*			
Community Home #5						
Community Home #6						



Community Hub Update

In 2021, Elmwood initiated the Future of Arlington Advisory Committee to develop a vision and plan for the development of a Disability Service Sector Community Hub – an intentional, inclusive community for all.

Key Principles:

- Commitment to development Community Hub.
- Maintain land site of 2012 Arlington Avenue.
- Maintain Administration Team at Community Hub.

The Community Hub will include Commercial Space, Programmatic Space, Administration and Training Spaces and intentional and inclusive Housing.



Community Hub – Next Steps

- Finalize vision and plan and share with key stakeholders – this will occur within the next 6-12 months. So, stay tuned!
- Submit funding proposals to key funders including the Canadian Mortgage and Housing Corporation.
- Complete the Manor Transition Initiative to ensure readiness for the Community Hub Initiative.

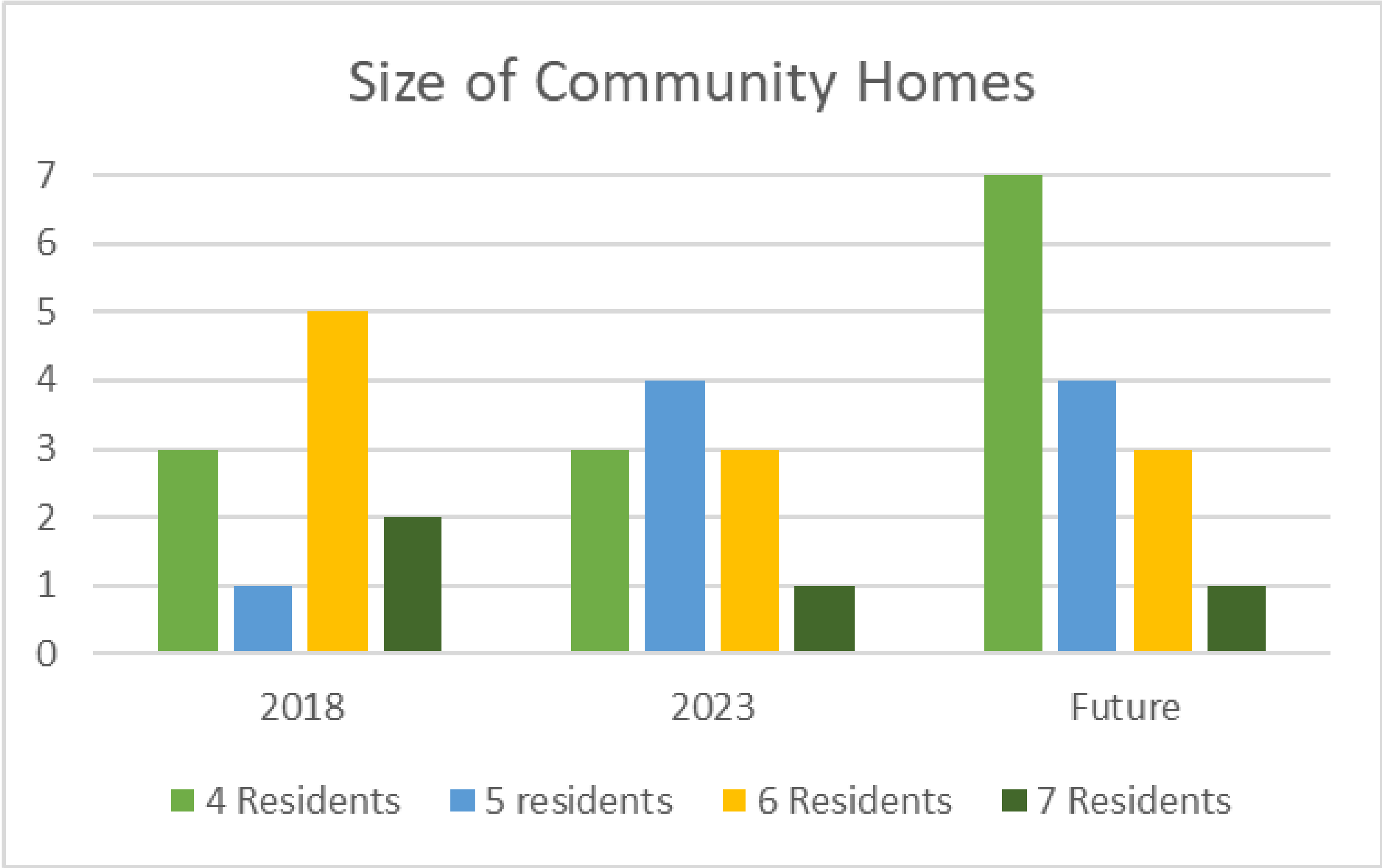


Resident Support Update

- New **Community Home Coordinator (CHCs) Schedules** now active focusing on coverage on evenings and weekends to ensure casual staff are supported and onboarded appropriately.
- New **Health Connector Schedules** in development focusing on an intentional shift to community-based services.
- **Resident Satisfaction Survey** – every Elmwood resident will have to opportunity to provide feedback through an anonymous survey. Results will be shared in the new year.



Community Home Update – Home Size



ELMWOOD

Challenges and Advocacy

- Delays in **funding approvals** for Community Homes 5 and 6 remain the major concern of Elmwood's leadership and Board of Directors due to the impact on the eight (8) remaining residents of Kinsmen Manor and Elmwood's focus on the development of a Disability Service Sector Community Hub.
 - Elmwood is currently seeking Government's timely approval on, at minimum, the homes remaining to fulfill the initiative.
- Elmwood is also completing **Contingency Planning** to ensure we are living our Guiding Principles and our collective commitment to this initiative – no resident left behind.
- Elmwood is forging ahead with plans for the development of a **Community Hub** focused on building an intentional and inclusive community for all on the former site of Kinsmen Manor.

How Can You Help?

- Stay Informed: Attend Family Forums
- Get Involved: Write a Letter
- Get Involved: Meet with your MLA

Your Ideas...

Discussion and Questions

Thank You!

Rachael Steinke, Executive Director

rsteinke@elmwoodyxe.ca

306-374-5151

Linda Boyko, Project Specialist

lboyko@elmwoodyxe.ca

306-649-6655

